



Opera

design
Radice & Orlandini

Tavolo / Table
Maxim-160 → P. 92

Domitalia



Lampada / Lamp
Urban-LS → P. 242

Tavolo / Table
Discovery → P. 70

Opera

L 55 cm
P 52 cm
H 83 cm
HS 46 cm



Rivestimento / Upholstery
Tessuto / Fabric MIRAGLIO



Tessuto / Fabric BOGOTÀ



Tessuto / Fabric TARANTINO



Tessuto / Fabric LAS VEGAS



Tessuto / Fabric SAKE



Pelle / Leather

Tutti i colori
All colors



Ecopelle / Imitation Leather ALCE

Tutti i colori
All colors

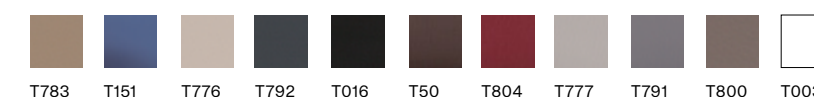


Ecopelle / Imitation Leather NOBUKO



Ecopelle / Imitation Leather TIME

Tutti i colori
All colors



Lana / Wool NORDIC

Tutti i colori
All colors



Ignifugo
Flame-retardant



Finiture / Finishes

Tessuto / Fabric – Stoff – Tissu – Tejido

Bogotá

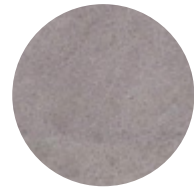
Composizione
Composition:
100% PL
Solidità alla luce
Light fastness:
≥ 4
Resistenza all'abrasione
Abrasion resistance:
Martindale
≥ 30.000 cicli / cycles



BO615
Beige
Beige
Beige
Beige
Beige



BO622
Fumo
Smoke
Rauch
Fumé
Humo



BO17
Perla
Pearl
Perle
Perle
Perla



BO100
Asfalto
Road
Asphalt
Asphalte
Asfalto



BO130
Tortora
Taupe
Braungrau
Taupe
Gris topo



BO02
Cammello
Camel
Kamel
Chameau
Camel



BO205
Ferro
Iron
Eisen
Fer
Hierro

Tarantino

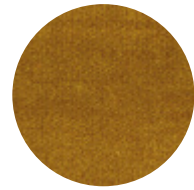
Composizione
Composition:
12% VI - 88% PL
Solidità alla luce
Light fastness:
≥ 4
Resistenza all'abrasione
Abrasion resistance:
Martindale
≥ 100.000 cicli / cycles



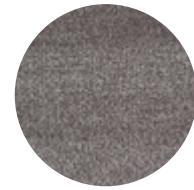
TA20
Sabbia
Sand
Sand
Sable
Arena



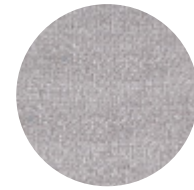
TA622
Castano
Chestnut
Kastanien braun
Châtain
Castaño



TA28
Zafferano
Saffron
Safran
Safran
Azafrán



TA17
Cenere
Ash
Asche
Cendre
Ceniza



TA19
Perla
Pearl
Perle
Perle
Perla



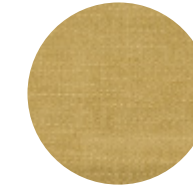
Finiture / Finishes

Tessuto / Fabric – Stoff – Tissu – Tejido

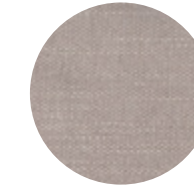
Las Vegas

Composizione
Composition:
12% VI - 88% PL
Solidità alla luce
Light fastness:
≥ 4
Resistenza all'abrasione
Abrasion resistance:
Martindale
≥ 80.000 cicli / cycles

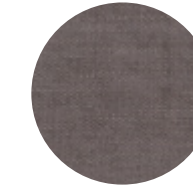
Antimacchia
Stain repellent



LV28
Limone
Lemon
Zitron
Citron
Limòn



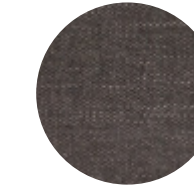
LV616
Oyster
Oyster
Auster
Huitre
Ostra



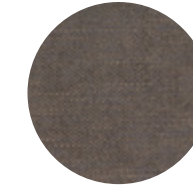
LV622
Talpa
Dark taupe
Dunkles Taupe
Taupe foncé
Marrón oscuro



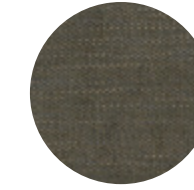
LV20
Lino
Linen
Leinen
Lin
Lino



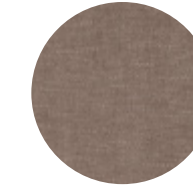
LV100
Cenere
Ash
Asche
Cendre
Ceniza



LV11
Fango
Mud
Schlamm
Boue
Barro



LV204
Bosco
Wood
Holz
Bois
Madera



LV130
Tortora
Taupe
Braungrau
Taupe
Gris topo



Finiture / Finishes

Tessuto / Fabric – Stoff – Tissu – Tejido

Miraglio

Composizione
Composition:
100% PL
Solidità alla luce
Light fastness:
≥ 4
Resistenza all'abrasione
Abrasion resistance:
Martindale
≥ 100.000 cicli / cycles

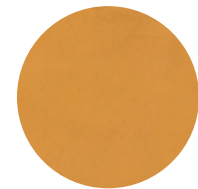
Idrorepellente
Water-repellent



M104
Crema
Cream
Crème
Crème
Crema



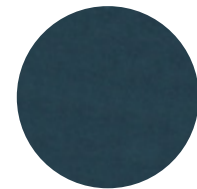
M130
Cachi
Khaki
Khaki
Kaki
Caqui



M105
Mandarino
Tangerine
Mandarine
Mandarin
Mandarina



M24
Oliva
Olive
Olive
Olive
Aceituna



M15
Petrolio
Petrol
Erdoel
Pétrole
Petróleo



M56
Cadetto
Sage green
Graugrün
Vert sauge
Salvia



M17
Carta da zucchero
Egg blue
Blassblau
Carte de sucre
Celeste



M19
Pervinca
Periwinkle
Hellviolett
Pervenche
Violeta



M23
Rosa
Pink
Rose
Rose
Rosa



M615
Salmone
Salmon
Lachs
Saumon
Salmón



M80
Terracotta
Brick
Ziegel rot
Brique
Ladrillo



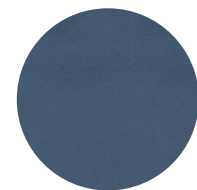
M616
Cenere
Ash
Asche
Cendre
Ceniza



M205
Fumo
Smoke
Rauch
Fumé
Humo



M617
Ardesia
Slate
Schiefer
Ardoise
Pizarra



M16
Avio
Air force blue
Blau-grau
Bleu
Avio



M18
Carbone
Charcoal
Kohle
Charbon
Carbón



M14
Oltremare
Deep sea
Tiefsee
Eau profonde
Agua profunda



M90
Amaranth
Amaranth
Amaranto
Amaranto
Amaranto



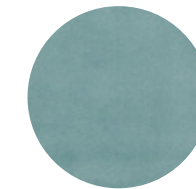
M26
Zafferano
Saffron
Safran
Safran
Azafrán



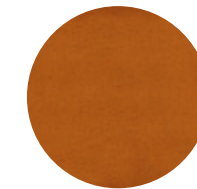
M100
Tronco
Trunk
Kofferraum
Coffre
Tronco

Finiture / Finishes

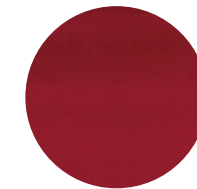
Tessuto / Fabric – Stoff – Tissu – Tejido



M21
Turchese
Turquoise
Türkis
Turquoise
Turquesa



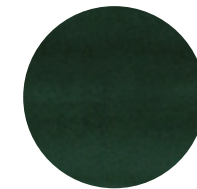
M07
Ruggine
Rust
Rost
Rouille
Herrumbre



M10
Scarlatto
Scarlet
Scharlach
Écarlate
Escarlata



M2100
Bistrot
Bistro
Bistro
Bistrot
Bistro

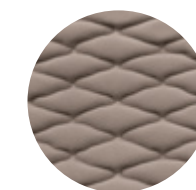


M13
Felce
Fern
Farn
Fougère
Helecho

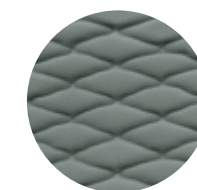
Miraglio-T

Composizione
Composition:
100% PL
Solidità alla luce
Light fastness:
≥ 4
Resistenza all'abrasione
Abrasion resistance:
Martindale
≥ 100.000 cicli / cycles

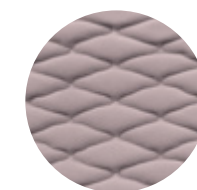
Idrorepellente
Water-repellent



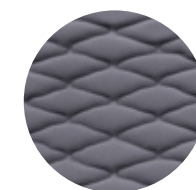
MT130
Cachi
Khaki
Khaki
Kaki
Caqui



MT56
Cadetto
Sage green
Graugrün
Vert saug
Salvia



MT19
Pervinca
Periwinkle
Hellviolett
Pervenche
Violeta



MT617
Ardesia
Slate
Schiefer
Ardoise
Pizarra



MT18
Carbone
Charcoal
Kohle
Charbon
Carbón



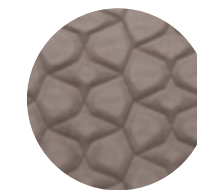
Miraglio-TM

Composizione
Composition:
100% PL
Solidità alla luce
Light fastness:
≥ 4
Resistenza all'abrasione
Abrasion resistance:
Martindale
≥ 100.000 cicli / cycles

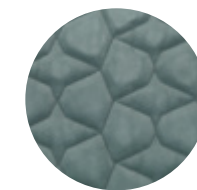
Idrorepellente
Water-repellent



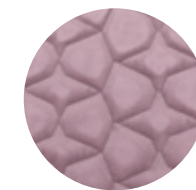
MTM104
Crema
Cream
Crème
Crème
Crema



MTM130
Cachi
Khaki
Khaki
Kaki
Caqui



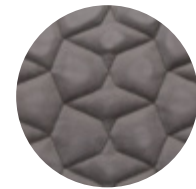
MTM56
Cadetto
Sage green
Graugrün
Vert saug
Salvia



MTM23
Rosa
Pink
Rose
Rose
Rosa



MTM80
Terracotta
Brick
Ziegel rot
Brique
Ladrillo



MTM205
Fumo
Smoke
Rauch
Fumé
Hu



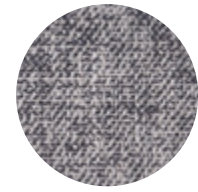
MTM617
Ardesia
Slate
Schiefer
Ardoise
Pizarra

Finiture / Finishes

Tessuto / Fabric – Stoff – Tissu – Tejido

Sake

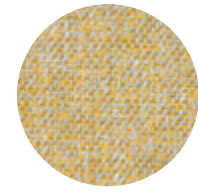
Composizione
Composition:
34% CO, 32% VI, 13% AC,
14% LI, 7% PL
Solidità alla luce
Light fastness:
≥ 4/5
Resistenza all'abrasione
Abrasion resistance:
Martindale
≥ 20.000 cicli / cycles
Resistenza al pilling
Pilling:
4



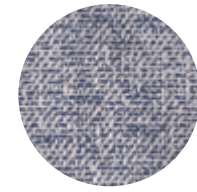
SK01
Cenere
Ash
Asche
Cendre
Ceniza



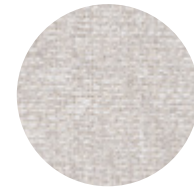
SK02
Tortora
Taupe
Braungrau
Taupe
Gris topo



SK03
Ocra
Ochre
Ocker
Ocre
Ocre



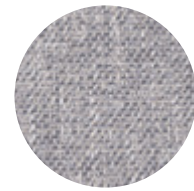
SK06
Notte
Night
Nacht
Nuit
Noche



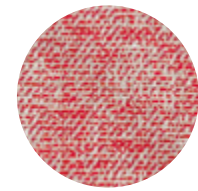
SK10
Ghiaccio
Ice
Eis
Glace
Hielo



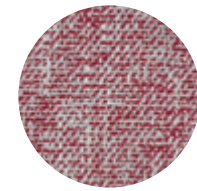
SK12
Corda
Rope
Seil
Corde
Cuerda



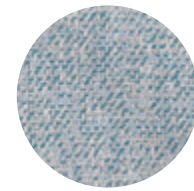
SK13
Grigio
Grey
Grau
Gris
Gris



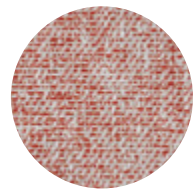
SK20
Ciclamino
Cyclamen
Zyklamen
Cyclamen
Ciclamen



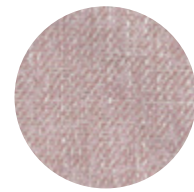
SK25
Bordeaux
Bordeaux
Bordeaux
Bordeaux
Burdeos



SK42
Acquamarina
Aquamarine
Aquamarin
Agu-marine
Aguamarina



SK45
Ruggine
Rust
Rost
Rouille
Herrumbre



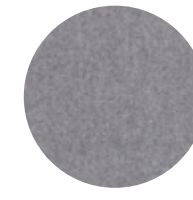
SK46
Rosa
Pink
Rose
Rose
Rosa

Finiture / Finishes

Lana / Wool – Wolle – Laine – Lana

Nordic

Composizione
Composition:
70% WO, 25% PA, 5% AF
Solidità alla luce
Light fastness:
5
Resistenza all'abrasione
Abrasion resistance:
Martindale
≥ 100.000 cicli / cycles



NC1000
Grigio
Grey
Grau
Gris
Gris



NC1002
Carbone
Charcoal
Kohle
Charbon
Carbón



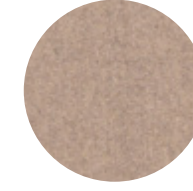
NC1037
Beige
Beige
Beige
Beige
Beige



NC1042
Acciaio
Steel
Stehlen
Acier
Acero



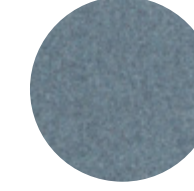
NC2017
Castano
Chestnut
Kastanien braun
Chatain
Castaño



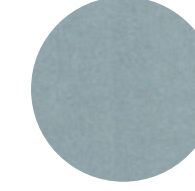
NC2151
Sabbia
Sand
Sand
Sable
Arena



NC2279
Petrolio
Petrol
Erdoel
Pétrole
Petróleo



NC2288
Azzurro
Light blue
Blau
Bleu
Azul



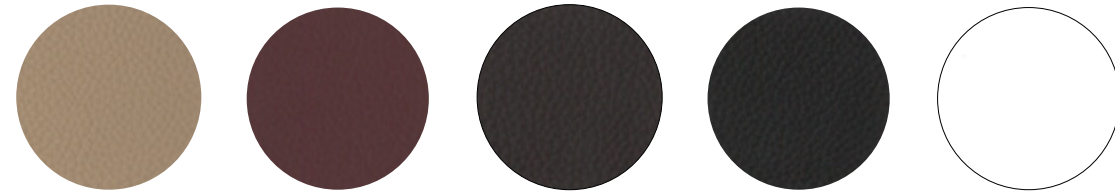
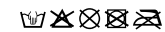
NC9860
Turchese
Turquoise
Türkis
Turquoise
Turquesa

Finiture / Finishes

Pelle / Leather – Leder – Cuir – Piel

Pelle – Leather – Leder – Cuir – Piel

Composizione
Composition:
100% Pelle naturale
Leather
Solidità alla luce
Light fastness:
8
Solidità alla flessione ripetuta /
Repeated flexural strength:
Martindale
≥ 50.000 cicli / cycles



PS
Sabbia
Sand
Sand
Sable
Arena

PC
Caffè
Coffee
Kaffee
Café
Café

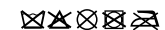
PTM
Testa di moro
Dark brown
Dunkelbraun
Marron
Marrón

PN
Nero
Black
Schwarz
Noir
Negro

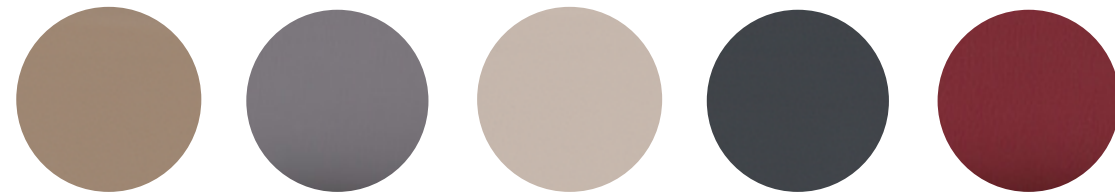
PB
Bianco
White
Weiß
Blanc
Blanco

Time

Composizione
Composition:
10% CO - 20% PES -
70% PVC
Solidità alla luce
Light fastness:
4/5
Resistenza all'abrasione
Abrasion resistance:
Martindale
≥ 102.400 secco/dry
cicli / cycles
≥ 51.200 umido/wet
cicli / cycles
Cl. 1IM - IMO -
BS7176/EN1021
PARTS 1&2
1994 - BS 5852
(CRIB 5) -
TB117:2013



Ecopelle – Imitation leather – Kunstleder – Similicuir – Imitación piel



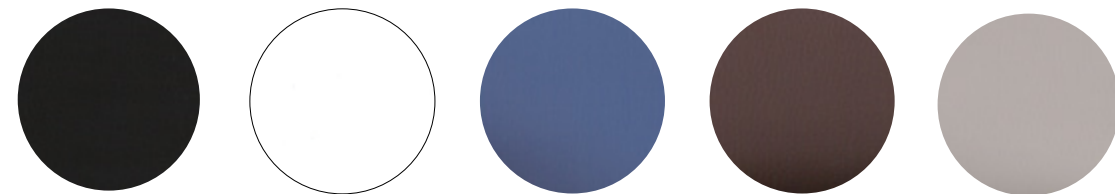
T783
Sabbia
Sand
Sand
Sable
Arena

T791
Grigio
Grey
Grau
Gris
Gris

T776
Tortora
Taupe
Taubengrau
Taupe
Tórtora

T792
Piombo
Lead
Blei
Plomb
Plomo

T804
Bordeaux
Bordeaux
Bordeaux
Bordeaux
Bordeaux



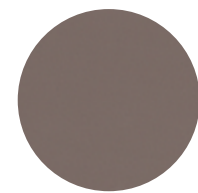
T016
Nero
Black
Schwarz
Noir
Negro

T003
Bianco
White
Weiß
Blanc
Blanco

T151
Avio
Air force blue
Avio
Bleu pétrole
Avio

T50
Cioccolato
Chocolate
Schokolade
Chocolat
Chocolate

T777
Perla
Pearl
Perle
Perle
Perla



T800
Fango
Mud
Schlammfarbe
Boue
Barro

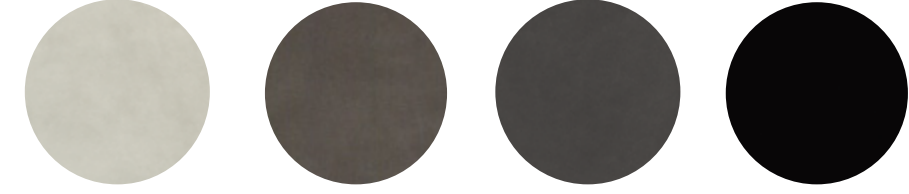
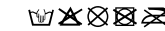
Finiture / Finishes

Ecopelle

Imitation leather – Kunstleder – Similicuir – Imitación piel

Nobuko

Composizione
Composition:
88% PU, 12% AF
Solidità alla luce
Light fastness:
5
Resistenza all'abrasione
Abrasion resistance:
Martindale
≥ 100.000 cicli / cycles

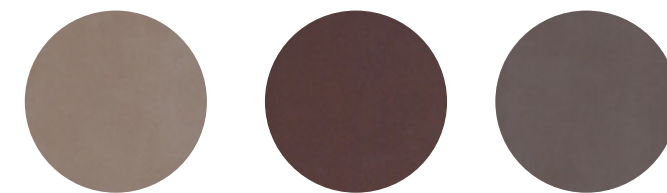


N3
Crema
Cream
Crème
Crème
Crema

N756
Fango
Mud
Schlammfarbe
Boue
Barro

N516
Carbone
Charcoal
Kohle
Charbon
Carbón

N780
Nero
Black
Schwarz
Noir
Negro



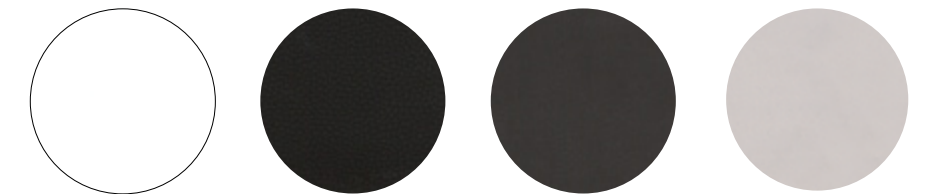
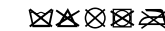
N483
Beige
Beige
Beige
Beige
Beige

N603
Cannella
Cinnamon
Zimt
Cannelle
Canela

N06
Macchiato
Macchiato
Macchiato
Macchiato
Macchiato

Alce

Composizione
Composition:
30% CO, 2% PU, 68% PVC
Solidità alla luce
Light fastness:
7
Resistenza all'abrasione
Abrasion resistance:
Martindale
≥ 102.400 cicli / cycles
UNI 9175/FA1 (1IM) - IMO - FTP BS 7176/EN1021
PARTS 1 & 2 1994 CALIFORNIA 117, SECTION E
Ignifugicità
Flame-retardant



A001
Bianco
White
Weiß
Blanc
Blanco

A016
Nero
Black
Schwarz
Noir
Negro

A140
Moka
Moka
Moka
Moka
Moka

A175
Cappuccino
Cappuccino
Cappuccino
Cappuccino
Cappuccino



A240
Fango
Mud
Schlammfarbe
Boue
Barro

A450
Cammello
Camel
Kamel
Chameau
Camel

A750
Tortora
Taupe
Taubengrau
Taupe
Tórtora

A850
Antracite
Anthracite
Anthrazit
Anthracite
Gris oscuro

A950
Noce
Walnut
Nussbaum
Noyer
Nuez